



Model 942-MW

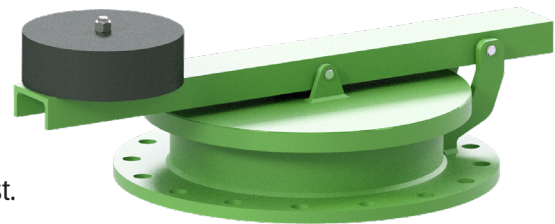
Emergency Pressure Relief Vent

Catalog # 77-9026

Drawing on extensive experience in the pressure relief field, the BS&B FlameSaf® Emergency Relief Vent offers a dependable, internationally certified and precisely engineered design to prevent excessive pressure build-up and rupture of valuable tankage during abnormal operation or as a result of exposure to fire. Designed for the highest standards of precision and safety, these vents use fluoropolymer or elastomer diaphragms to provide tight seals between pallet and seat, which coupled with the 10% overpressure feature result in reliable and accurate response to even minimal changes in pressure. Users benefit from optimized operating conditions close to MAWP (Maximum Allowable Working Pressure) while ensuring operation that safeguard both personnel and environment.



Model 942-MW
Emergency Pressure
Relief Vent



Features

- Complies with API 2000 / EN ISO 28300
- Certified to ATEX – Directive 2014/34/EU
- Achieves full open (relieving pressure) at just 10% overpressure
- Flexible seal material choices including FEP, FPM, NBR and others on request.
- Leakage rates much tighter than API 2000/EN ISO 28300 requirements

Protection

Group II EPL Ga/Gb device suitable for use with gas/air and vapour air mixtures of inflammable liquids of explosion group IIA/IIB.

Flange Connection Type

EN 1092- PN10
ANSI Class 150 B16.5
ISO 7005 PN10

Other types available upon request.

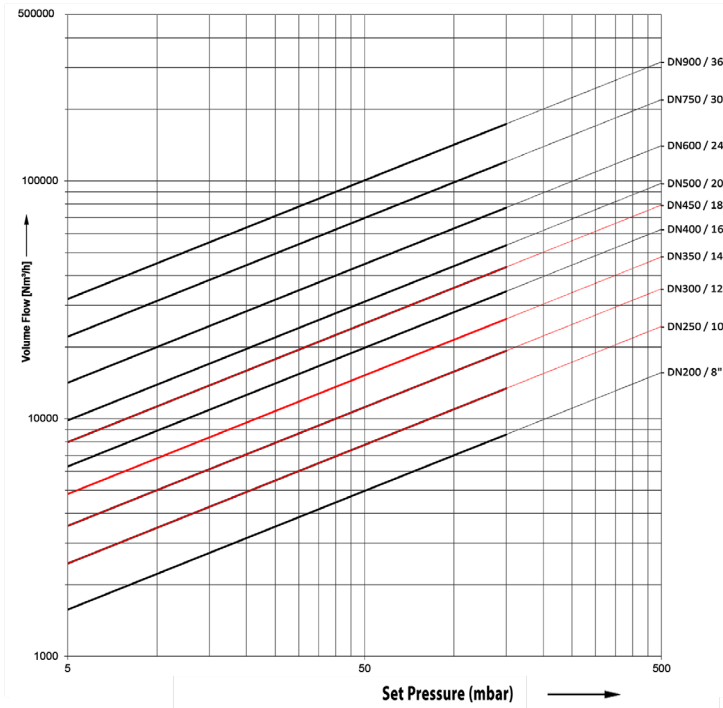
- Other types available upon request

Materials of Construction				
	Carbon Steel Version		Stainless Steel Version	
	Carbon Steel	Stainless Steel	Carbon Steel	Stainless Steel
Disk		✓		✓
Wet parts (Disk and Seat Pipe)		✓		✓
Flange	✓			✓
Arm	✓			✓
Weights	✓			✓

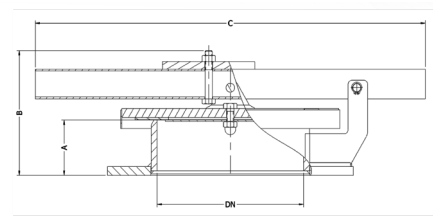
EC Type Examination	
Designation	942-MW 200 to 900
Protective System	Emergency Pressure Relief Vent
ATEX Certificate Number	IBExU20ATEX1057 X
Compliance with	ATEX Directive 2014/34/EU EN ISO 80079-36 EN ISO 80079-37 EN ISO 28300 API Standard 2000



Tank Pressure/Volume Flow Chart



Dimensions



DN	Dimensions (mm)		
	A	B	C
DN200 / 8"	75	168	540
DN250 / 10"	110	216	650
DN300 / 12"	110	216	670
DN350 / 14"	113	219	715
DN400 / 16"	118	229	715
DN450 / 18"	118	229	765
DN500 / 20"	143	254	885
DN600 / 24"	143	262	960
DN750 / 30"	178	292	1150
DN900 / 36"	178	297	1350

*Dependent on set pressure

Temperatures	
Atm. Temperature	-20 °C to +60 °C
Operating Temperature*	-20 °C to +160 °C
*Maximal 80% of ignition temperature stored medium	

Please contact us for applications outside of the above ranges.

Vent Settings	
Set Pressure	+2.5 mbar to +150 mbar

BSBflamearrester.com | BSBsystems.com
 Visit our website for the most complete, up-to-date information

© 2020 December, BS&B Innovations Ltd. Updated July 2021.

Products, specifications and all data in this literature are subject to change without notice. Questions regarding product selection and specifications for specific applications should be directed to BS&B. All sales are subject to the BS&B companies' standard terms and conditions of sale. Nothing herein should be construed as a warranty of merchantability or fitness for a particular purpose.